

## The world most advanced waste treatment facility - Project Information -

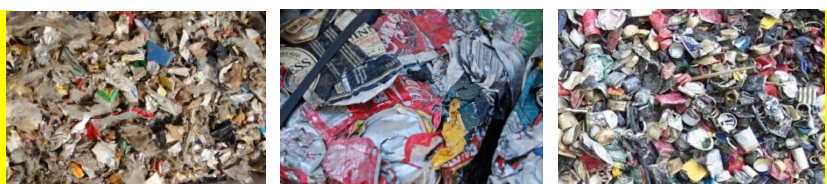
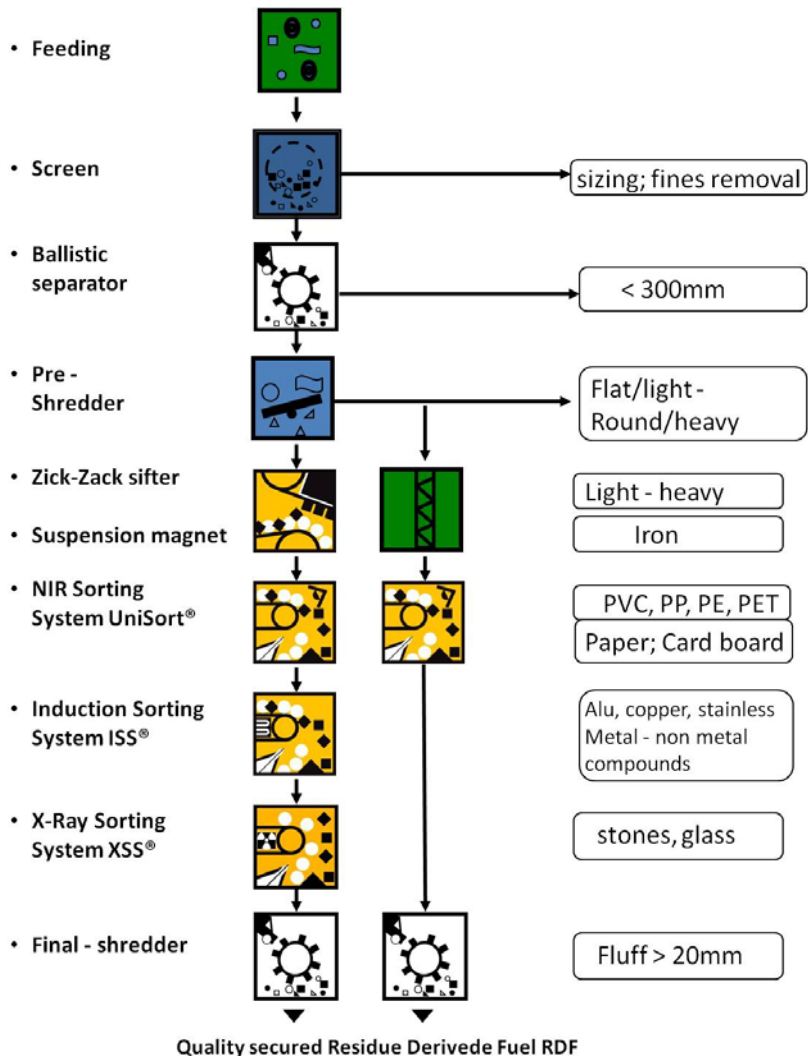
The company Korn Recycling GmbH is currently setting up what is probably the world's most modern waste processing facility in the south German town of Albstadt.

After last year's devastating fire, Korn has continued to back its concept of producing high-grade, quality-assured residue derived fuel RDF for the European energy sector and of making organic and metallic raw materials available to the industries. The facility is characterised by high quality and technological variety in the area of sorting and processing technology, and may justly be described as the world's most advanced facility in the area of commercial, bulky and construction site waste sorting.

As the last time the companies STEINERT and STADLER were once again selected as the main suppliers.

✓STEINERT is supplying most of the sorting technology, which includes magnet technology and sensor sorting systems like the precise X-ray sorting technology.

✓STADLER is responsible for the construction of the plant and is supplying the conveyor technology and the structural steelwork, along with its ballistic separators.



On the basis of their good experience in the area of sorting when the first facility was constructed, this time Korn Recycling GmbH decided to procure the lion's share of the sorting equipment exclusively from the company STEINERT in Cologne. As a full-range supplier in the area of sorting technology, STEINERT not only delivers the magnet technology, but also all of the sensor-based sorting systems. This is obviously a clear advantage when matching the interfaces of the individual, extremely diverse technologies. The comprehensive test program had already confirmed this role during the preparatory phase.

Precise and high-quality sorting is guaranteed, not least by six overband magnetic separators, enhanced by a total of ten UniSort® P NIR sorting systems, an ISS® Induction Sorting System for two parallel product streams and two XSS® X-ray Sorting Systems.

Convinced by the construction of its first facility, Korn Recycling is once again entrusting the detailed planning from the assembly to the turnkey handover to the experienced family firm STADLER from Altshausen. STADLER is installing a number of its STT5000\_101 ballistic separators for separating the main material stream. The stable and high-quality structural steelwork and the conveyor technology are also being supplied by STADLER.

Some benchmarks:

Throughput:	25t/h or 100,000 t/a
Input material:	Commercial refuse, bulky refuse, production wastes, construction wastes
Built area:	8,060 m <sup>2</sup> , of which 2,350 m <sup>2</sup> is a structurally separated storage area for substitute fuels
Installed electrical power:	3 MW
Products:	Residue Derived Fuels, iron, non-ferrous metals, wood, paper/paperboard/cardboard, inert materials, plastics
Operating personnel	5

