



The sorting plant is divided into a feeding hall and a processing hall.

#### Feeding hall:

- 4 feeding bunkers
- Main feed via sack opener
- Feed for loose co-mingled material
- Feed via bale opener for material already pressed into bales
- Feed for loose plastics (pre-sorted material)



#### Processing hall:

- Separating and dispensing unit (the material is separated into two independent lines)
- Ballistic separators
- Overband magnetic separators
- Eddy current separators
- Manual sorting cabins (equipped with heating and ventilation systems)
- Film extraction units (if the film is sorted by hand, the throughput can be increased by the installation of extraction units above the sorting line.)
- Near infra-red units (optical detection)
- Bi-directional bunker system
- Feeding line press for individual loads
- Control system (remote maintenance via modem)



# STADLER®

## Products for tomorrow's world

STADLER® UK Ltd.  
Suite B, First Floor, Caswell Park  
Caswell Lane, Clapton-in-Gordano  
Bristol BS20 7RT  
Phone: +44 (0) 1173 702 701  
Fax: +44 (0) 1275 399 153  
Mobil.: +44 (0) 7974 339 980

Contact: Trevor Smart  
UK Sales-Manager  
trevor.smart@stadler-engineering.com  
www.stadler-engineering.com

**Head office Germany**  
STADLER® Anlagenbau GmbH  
Robert-Bosch-Straße 4  
88361 Altshausen  
Phone: +49 7584 9226-60  
Fax: +49 7584 9226-69  
info@w-stadler.de  
www.w-stadler.de

#### Innovations

Our product developers have already proven their technical expertise and capability for innovation many times. STADLER® has received several innovation awards for clever sorting solutions of detrimental substances from material mixtures.



# STADLER®

Engineering at its best



## Sorting plant for co-mingled material

The STADLER® sorting plant is loaded with materials from collection vehicles (pavement collection).

**STADLER®**

Recyclable material fractions:  
Cardboard, plastic film, aluminium, metal, refuse (fine fraction unsorted material < 45 mm), newspapers, mixed paper, PET transparent, PET coloured, HDPE natural, HDPE coloured (mixed)



**STADLER®**

**The project:**

Cutts Recycling has signed a contract to recover material from the co-mingled material flow.

This plant processes only co-mingled material with a minimum throughput of 25 tonnes per hour.

**Specifications input: (average)**

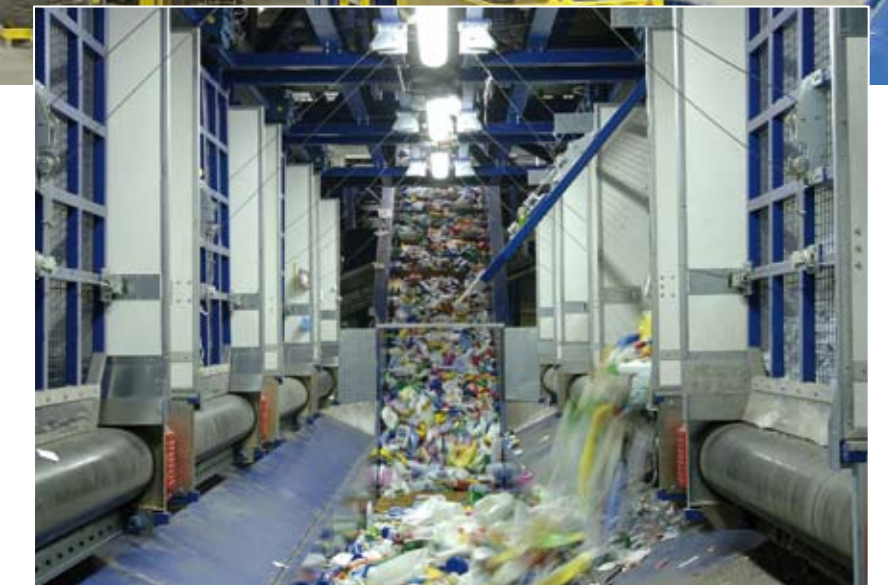
- Newspapers and magazines (29%)
- Cardboard (4%)
- Co-mingled paper (34%)
- Plastic film (4%)
- Plastic, HDPE (5%)
- Plastic, PET (3%)
- Other plastics (4%)
- Metal (4%)
- Non-metal (2%)
- Textiles (2%)
- Dirt accumulations, non-recyclable such as fines, glass, WEEE (9%)

**Specifications output:**

The main products which are recovered can be divided into 3 main categories: paper, plastic and metal.

**Sub-categories:**

Cardboard, plastic film, aluminium, metal, refuse (fine fraction unsorted material < 45 mm) newspapers and magazines, mixed paper, PET transparent, PET coloured, HDPE natural, HDPE coloured (mixed)



Boxes